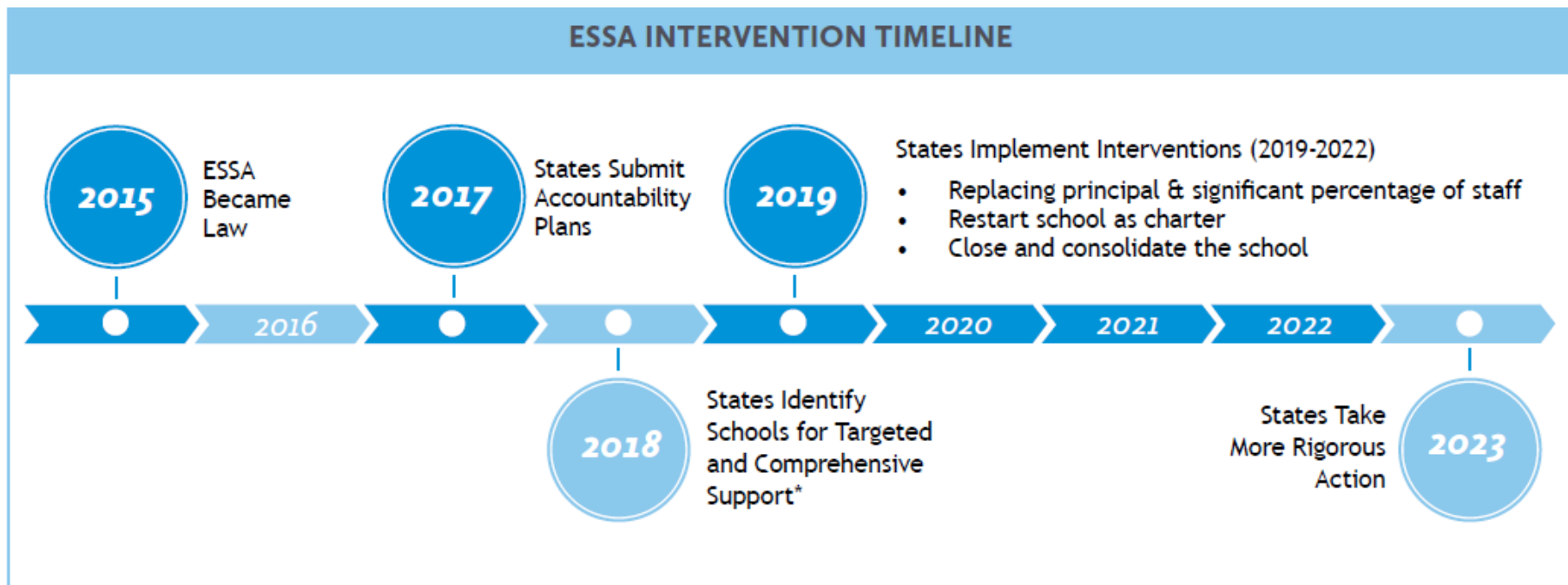




School Interventions

ESSA Playbook Series

ESSA Interventions Timeline



Targeted and Comprehensive Support Schools



Targeted Support Schools are:

- Schools that have at least one subgroup of students that are “consistently underperforming” as defined by the state.
- Schools with a subgroup performing similarly to all students in the lowest-performing 5 percent of Title I schools.

Comprehensive Support School are:

- Schools performing in the lowest 5 percent statewide.
- Schools that have a four-year graduation rate of less than 67 percent.
- Schools that have a subgroup that is performing as poorly as the lowest 5 percent of schools in the state and has not improved with targeted support.

Two Key State Actions



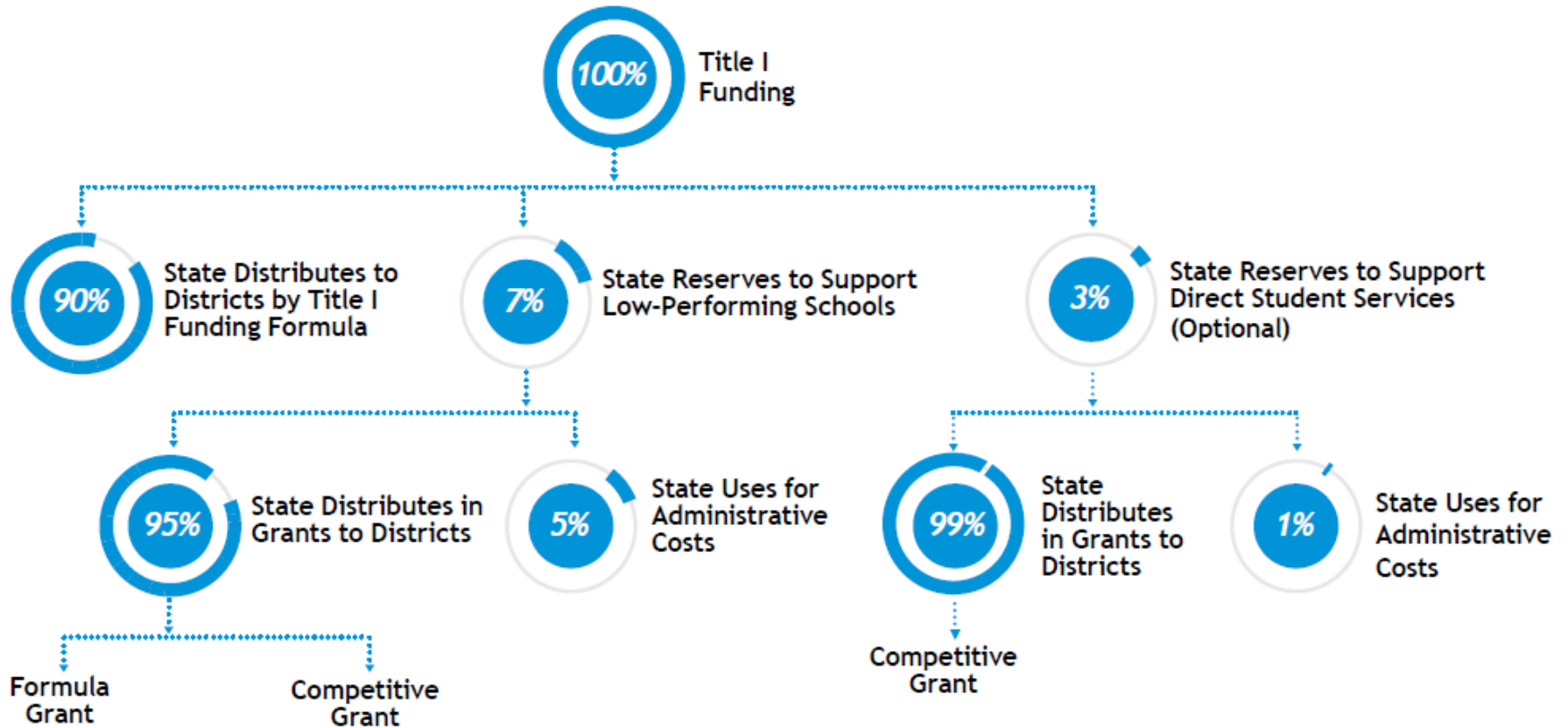
ExcelinEd recommends two key state actions to turn around comprehensive support schools.

- 1 States should influence district turnaround strategies by reviewing districts' school improvement plans and by distributing federal improvement funds through competitive grants.
- 2 Increase choice to address persistently low-performing schools.

Title I Funding Distribution



DISTRIBUTION OF TITLE I FUNDING





Staff Quality and Support

- Schools' ability to recruit and retain effective teachers has a significant impact on school quality.
- Strong instructional leadership from the principal and district support can produce positive results.
- ExcelinEd encourages state legislators to improve existing teacher and leader preparation programs.

High-Quality Data and Reporting

- Data-driven decision-making at the state, district and school level is a common strategy in successful school turnaround efforts.
- High-quality and accessible data on school quality helps parents make informed choices for their children.

Integrated Student Supports

- Struggling schools, students and families often have additional health, emotional and behavioral needs but have trouble effectively accessing the maze of public and private services in the community.
- Organizations like Communities in Schools can work in conjunction with other transformative reforms to ensure state and local resources are reaching those that need it most.